



(Formerly TIPWeb-IT)
Release Notes – Version 15.3

Frontline Education is happy to announce the release of Asset Management v 15.3 which includes the following enhancements:

- **Microsoft Intune MDM Integration**

This document outlines key capabilities, setup information, feature scope, and usage tips to help users understand and use this functionality effectively.

Microsoft Intune MDM Integration

Frontline Asset Management version 15.3 now officially supports Microsoft Intune MDM integration. This release continues our commitment to flexible MDM connectivity and improves device visibility by syncing key device data directly from the Microsoft Intune API.

Key Capabilities

- **MDM Field Synchronization:** Automatically imports device properties including: Device Name, MAC Address, Last Seen Date, OS Version, and MDM Status.
- **Nightly Sync via API:** A read-only job runs every night ensuring asset data stays current. Devices are matched by serial number.
- **On-Demand Sync:** *District Administrators* can initiate a one-time sync via the Microsoft Intune Integration Settings screen to validate credentials or fetch latest data.
- **Field Mapping:** Microsoft Intune MDM fields are mapped to Asset Management system-defined fields, viewable in the Tags Grid, Tag Information modal, and applicable reports.

Data Fields Pulled from Microsoft Intune

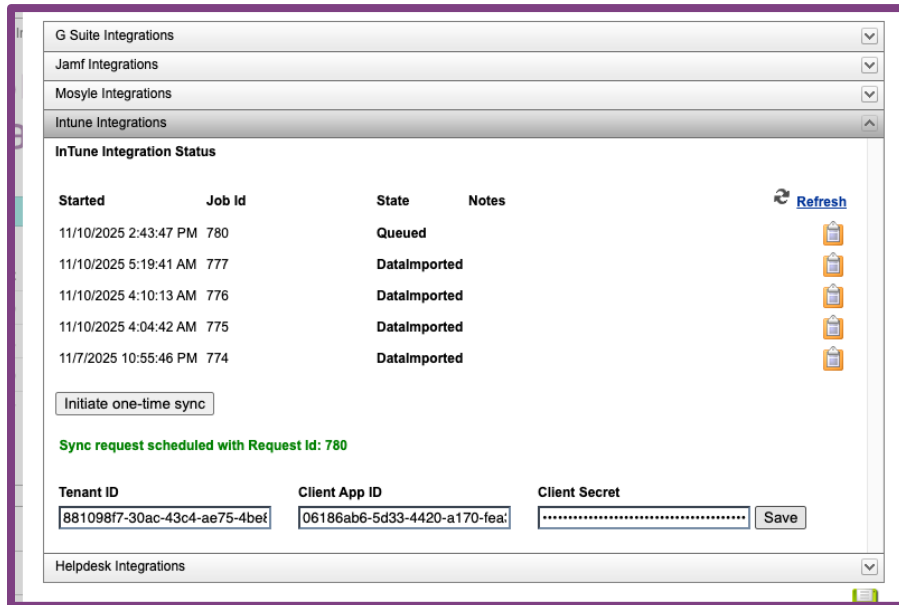
The Microsoft Intune MDM integration currently supports 6 key device fields into Asset Management. At this time, **External IP, Internal IP, Lat/Long, and Last Login Date** are not provided through the Microsoft Intune API.

Asset Management MDM Field	Microsoft Intune Field Name
Device Name	DeviceName
External IP	—
Internal IP	—
Last Login Date	—
Last Login User	EmailAddress
Last Seen Date	LastSyncDateTime
LAG/LONG	—
MAC Address	wifiMacAddress
MDM Status	DeviceRegistrationState
OS	OperatingSystem

Setup & Authorization

Enablement Prerequisites:

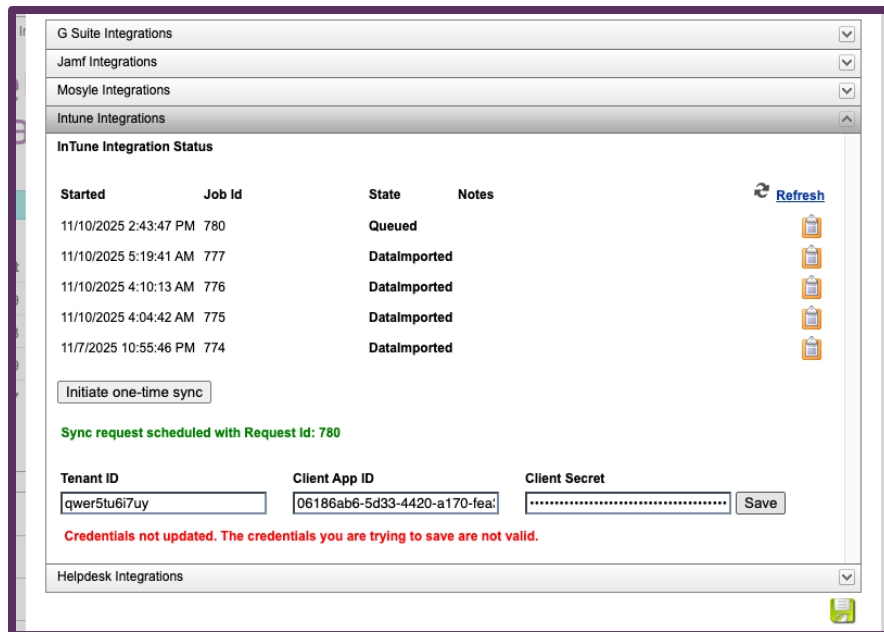
- a) **Microsoft Intune / Microsoft Entra Administrator rights** – You must be a Global Administrator or have the Cloud Application Administrator and Microsoft Intune Administrator roles.
- b) **Microsoft Microsoft Intune license** – Any tenant with Microsoft Intune Plan 1 or higher supports API integrations through Microsoft **Graph**.
- c) **Asset Management Access** – You must be a District Administrator in Frontline Asset Management to configure integrations.



Setup & Verification:

1. Log in to Frontline Asset Management with **District Administrator** rights.
2. Under *Management*, click **Integration Settings > Microsoft Intune Integrations**.
 - In the Tenant ID, paste the Directory (Tenant) ID from Microsoft Intune Manager console.
 - In the Client App ID field, paste the Application (Client) ID with device-read access generated from Microsoft Intune Manager console.
 - In the Client Secret field, paste the API Value (Client Secret) password from Microsoft Intune Manager console.
3. Click Save to verify the Microsoft Intune credentials entered.
4. Click Initiate One-Time Sync to run the first sync manually.

Note: If your Tenant ID, Client App ID, or Client Secret are incorrect or left blank, an error message will display below the field that is either incorrect or missing.



Microsoft Intune Integration Status:

The **Microsoft Intune Integration Status** grid gives administrators a clear view into recent sync activity between your Microsoft Intune MDM and Frontline Asset Management, including job status, logs, and error tracking.

The integration grid includes a real-time sync log that displays:

- **Started** – The date and time the sync began.
- **Job ID** – A unique identifier for each sync attempt.
- **State** – Status of the sync (e.g., DataImported, Queued, Processing, Error).
- **Notes** – Displays summary info for failed jobs or flags issues requiring attention.
- **Clipboard Icon** – Click to open a step-by-step breakdown of sync activity for that Job.
 - When you click the log icon for a sync job, you'll see a timestamped list of every step in the process, including:
 - Queued
 - Processing
 - Authenticated
 - DataExtracted (device count shown)
 - DataUploaded
 - DataTransformed
 - DataImportInitiated
 - DataImported

Note: If a job fails, the **State** will indicate Error, and the **Log** will show which step failed (e.g., Failed to extract data, Access token invalid, or Upload failed) for faster troubleshooting.

Monitoring, Verification & Data Access

Nightly Sync Logic

- Runs once every night.
- Matches devices by **serial number**; no serial, no update.
- Duplicate serials trigger a warning and are skipped.

Verifying a Sync

1. Check the **Job History** grid for *Completed* status.
2. Compare values with Microsoft Intune if needed.
3. Open a tag record and confirm MDM fields are populated.

Tag: 57352	Device Name: 222334e7-441e-4f2b-bf29-009b1549d4a2
Serial: 5CD4334GZJ	External IP:
Site: Z Removed From Service	Internal IP:
Location: Room: Recycled DOB	Last Login Date: 2017-05-25 EST
Department: Department of Technology	Last Login User: zyfiscal@greenbaystudent.org
Asset Type: Standalone	Last Seen Date: 8/1/2017 3:52:05 PM EST
Status: Returned to Vendor	LAT/LONG:
Scan Date: 06/13/2024	MAC Address: ec0ec42d4c07
RFID: Not Enabled	MDM Status: DEPROVISIONED
	OS: 57.0.2987.148
	Name of Program or Initiative: Access to Technology-Secondaries
	TAF Number:
	Staff Device:
	Exclude from Automation:

Viewing MDM Data

Asset Management Area	Details	Users Access
Tag Information Modal - View/Edit/Report	All 9 MDM fields are displayed, values are applicable as per customer imported data.	All Users
Admin/Site/Warehouse View > Tags/Inventory Grid	Displayed as per order of the grid columns selected	All Users
Edit Columns & Grid (Tags Grid) - MDM fields and Data display	Displayed as per order of the grid columns selected	All Users
Archived Inventory Report	By default, all columns display in this report, after Asset UID and before Custom Field 1	Admin Admin, Admin User
Component Listing Report	Displayed as per order of the grid columns selected	All Users
Status Lifecycle Report	Displayed as per order of the grid columns selected	All Users
Tag Listing Report	Displayed as per order of the grid columns selected	All Users
Inventory Listing Report	Displayed as per order of the grid columns selected	All Users
Site View > Tag Export	Display after Asset UID and before Custom Field 1	All Users
Warehouse View > Inventory Export	Display after Asset UID and before Custom Field 1	Warehouse Users, Admin Admin, Admin Users
Site/Warehouse View > Rooms Tab	Verify the contents of the room for MDM fields after import	All Users
Drop-down - Rooms Component Listing Report	Display after Asset UID and before Custom Field 1	All Users

Known Limitations

- Duplicate serials are skipped.
- Devices must pre-exist in Asset Management; the sync does not create assets.
- Some data fields may not be populated depending on device type or availability of the data from Microsoft Intune's APIs.
- Detailed Import Reports are not supported at this time (e.g. synced 100 devices, 50 were skipped due to duplicate serial number)
- Integration is read-only; no changes are written back to Microsoft Intune (e.g., no OU changes or provisioning/deprovisioning).
- Integration does not support audit workflows currently.
- Some data points may be blank if Microsoft Intune does not supply them for a given device type.
- No CSV download of device import information is available yet to see which serials were updated, skipped or not found.